

佩耶設計團隊

Peia Associati

人像攝影：佩耶設計團隊
Portrait · Peia Associati



吉安佩羅·佩耶 Giampiero Peia

- 1961 Born in Lodi, Italy
 - 1986 Obtained a degree in architecture at the architectural faculty of Milan
 - 1987 – 1994 Became a close collaborator and partner of Ignazio Gardella studio
 - 1995 Peia Associati Studio in Milan, designing innovative solutions from architecture to industrial design
 - 2004 The office was selected by the Triennale for the annual Open Studio rally
 - 2006 Arab Engineering Bureau and Peia Associati submitted their project for The new Qatar National Bank Headquarter on Doha cornice
Giampiero Peia e Marta Nasazzi opened a New office Peia Associati Srl in Milan
- ## 瑪塔·娜茲奇 Marta Nasazzi
- 1975 Born in Lecco, Italy
 - 2000 Obtained a degree in architecture at the architectural faculty of Milan
 - 2000 – 2001 Collaboration with Drade projects and landscape projects for Michele De Lucchi
 - 2002 – 2005 Became a close collaborator of Piero Lissoni studio
 - 2006 Marta Nasazzi e Giampiero Peia opened the new office Peia Associati Srl in Milan

Today, at a time of undifferentiated globalisation, Italian taste goes beyond the generic appreciation for our food and wine, fashion and design around the world. There is undoubtedly an ideal of "elegance" and, especially, an overall approach to projects that have been most successfully achieved in modern Italian tradition.

Architects like Gardella, under whom we studied, and Gio Ponti embodied the intellectual/technical/creative model that dominated – with elegance – all kinds of projects and coordinated the entire creative process, the way a great film director would (another field in which Italy has a long and celebrated tradition). The current specialisation in the industry has stamped out this model, especially abroad, but our intent is to maintain this interdisciplinary approach and continue to enjoy and share experiences in a wide variety of fields for on-going research and enrichment. We might design an 'Andy Warhol' exhibit, then a facet factory whose products we also design, along with the master plan for the development of independent buildings and their interiors, down to the still life. And why not design the hardware and glasses on the table too? "From the spoon to the city" still accurately sums up this ability to see the big picture.

And it's also a question of tradition: Tradition needs to be renewed culturally, but for creativity to be meaningful you need tradition. Certain modern ideologies focus obsessively on breaking with tradition and rejecting it, but only by reinterpreting it with a modern eye can you achieve the true essence of culture. That is what we aim to do. We have always tried to respect local traditions while "giving them the right modern look" with large windows and wide openings to the surrounding landscape, even where it might seem unworthy. We always look for inspiration in local needs and traditions and this can be seen in our facades and the distribution of interior spaces.



在今席捲世界的全球化浪潮下，義大利的品味已經超越對美食、美酒、流行、與設計的欣賞；無可置疑的，這些活動都展現出義大利對於「優雅」的理想，而其中最成功展現現代義大利傳統的專案採取整體的方式。包括Gardella（我們研究的指導老師），與Gio Ponti在內的建築師體現出這種結合理智、技術、創意並充滿優雅的模式；他們所有的案子都有這個特點，如同偉大的電影（另一個義大利擁有光榮傳統的領域之一）（another field in which Italy has a long and celebrated tradition）導演般整合整個創意過程。目前建築業的專門化已經扼殺了這個模式，尤其在世界上的其他國家。但是，我們試圖保持這種跨領域的作法，並且分享我們在許多領域的經驗，以進行持續的研究與加強。

在獨立的建築物與內部裝潢的專案執行過程中，我們可能會設計「安迪沃荷」（Andy Warhol）展，與生產我們設計的水龍頭工廠合作，還可能同時設計餐具與玻璃器皿，以呈現生活的各種面向。「小到湯匙大到城市」的專案呈現出我們看見生活整體的能力。此外，這涉及傳統這個問題；傳統需要在文化上進行更新，但是有價值的創意需要傳統。部分的現代意識形態過分強調脫離拒絕傳統，但是只有透過現代的眼光重新詮釋傳統，才能觸及文化的核心，而這就是我們的目標。我們一直試圖尊重各地傳統，同時賦予建築新的樣貌，如面向周遭視野的大窗戶與寬敞出入口之設計，即使看似微不足道的地方也同樣予以注重。我們總是在當地的需求與傳統中找尋靈感，從我們建築物的外觀與內部空間設計可以看出這一點。

Swimming Pool Construction |
Villa Private, Lecco, Italy

游泳池結構
義大利列柯斯秘別墅

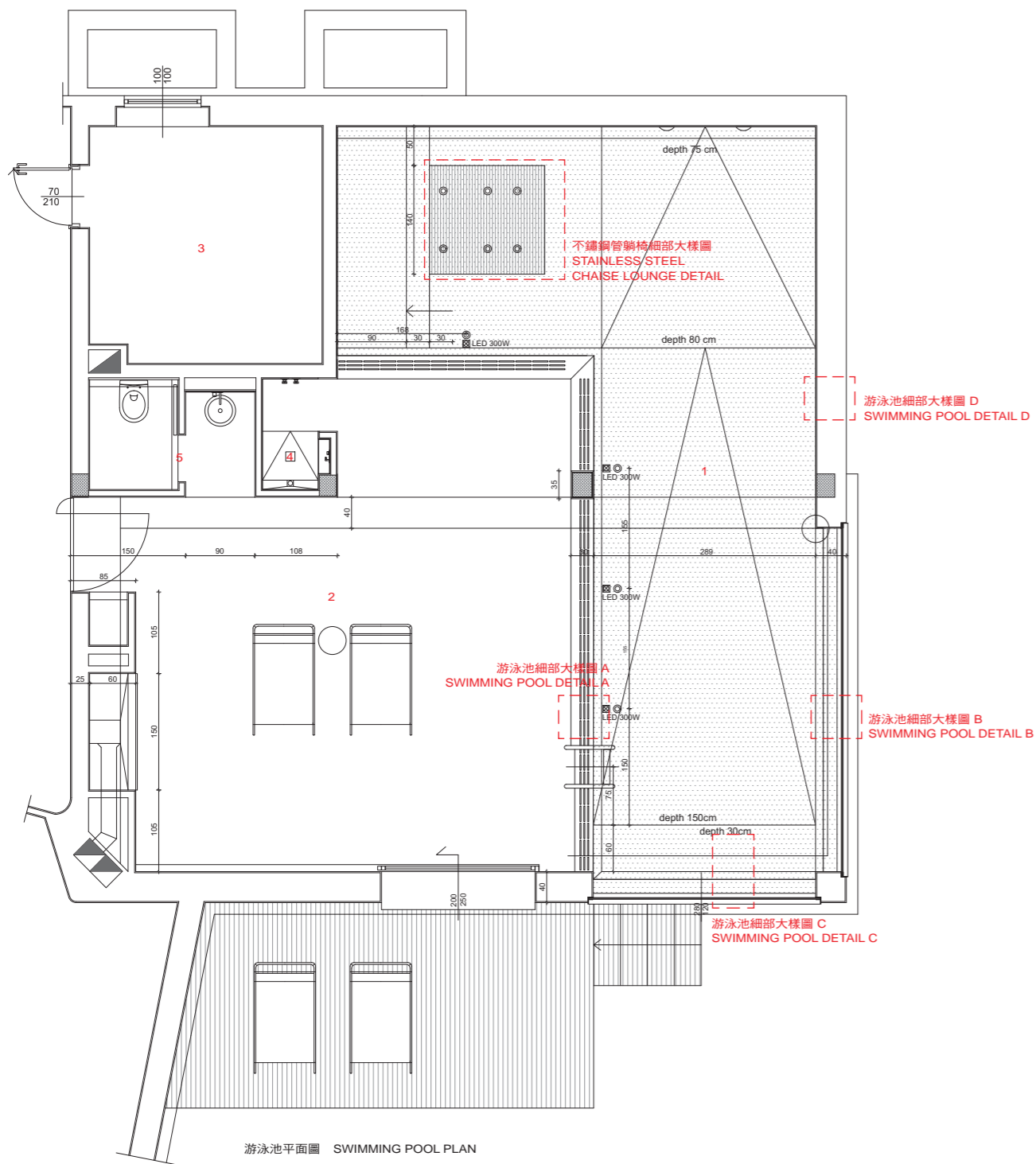
佩耶設計團隊 | Peia associate

攝影: Peia Associate
Photos: Peia Associate

本設計案四周環繞列柯山脈，景緻蒼翠宜人，此處是義大利北部一處湖泊旁邊的美麗小鎮。設計案的目標是要讓住戶飽覽美麗的湖光山色，因此佩耶設計團隊 (Peia associate) 為起居室規劃數面巨型窗戶，並在室內游泳池裝設延伸的連續玻璃，甚至採用柚木興建日光露台，並且於四週栽種竹子與檸檬樹。透明且混入蛋白石的玻璃窗讓別墅顯得極為透明，同時能順暢傳遞光線。

游泳池設有紅色的LED燈，隨時變化顏色的燈光可營造劇場的氣氛。游泳池採用當地的蛇紋雲石 (Serpentine) 來鋪面，另有一張專為水柱按摩打造的不鏽鋼躺椅。

This project is housed in the green landscape of the mountains of Lecco, a small beautiful town on the banks of a lake in north Italy. The goal of the project is to try and provide the best views of the beautiful panoramic landscape. To achieve this goal Peia associate projected big glass windows for the living area, elongated continuous windows for the internal swimming pool and the sunbath-terrace enclosed by bamboo and lemons made in tank. The use of transparent and opal glass helped the house to have major transparency and good transmission of light. In the swimming pool there are led lights-changing colour for a scenographic atmosphere. The swimming pool covering is local "serpentine" stone, a chaise lounge made of stainless steel tubes is used for water massage.

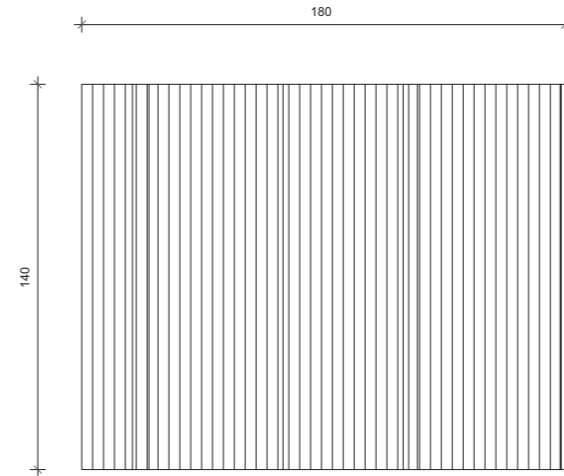


游泳池平面圖 SWIMMING POOL PLAN

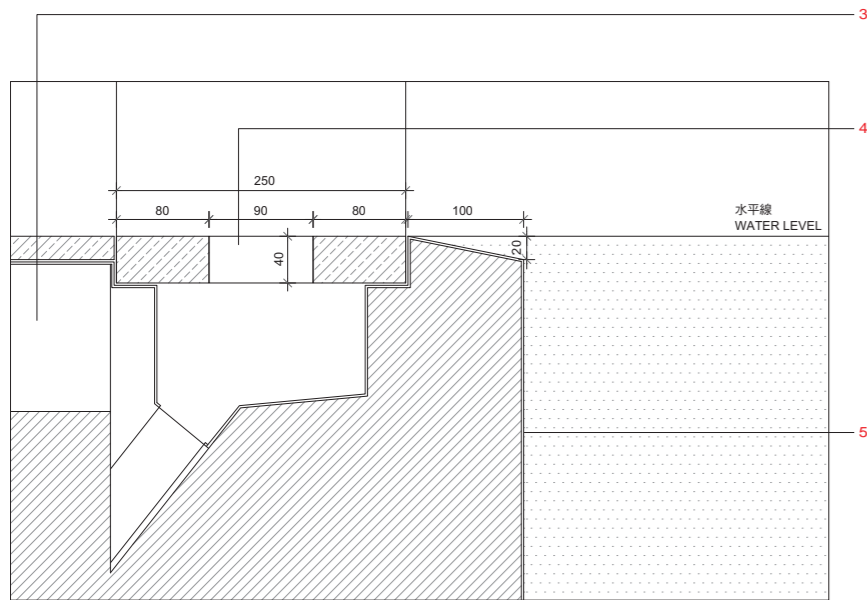
- 1. 游泳池
- 2. 休息區
- 3. 機械房
- 4. 淋浴間
- 5. 盥洗室

- 1. swimming pool
- 2. relaxing zone
- 3. technical room
- 4. shower
- 5. lavatory

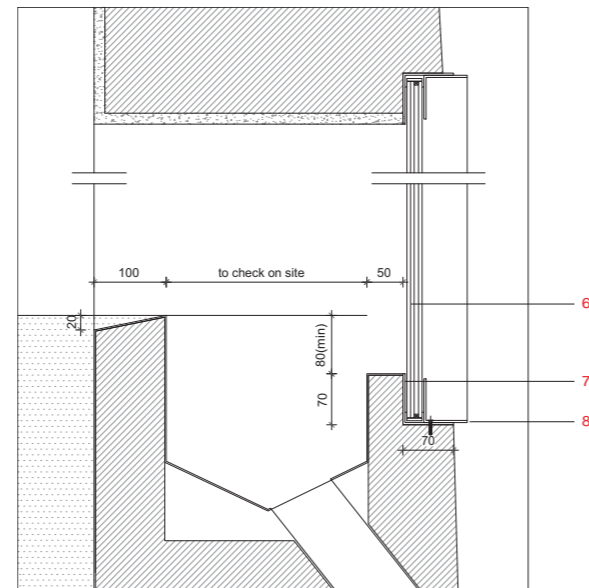




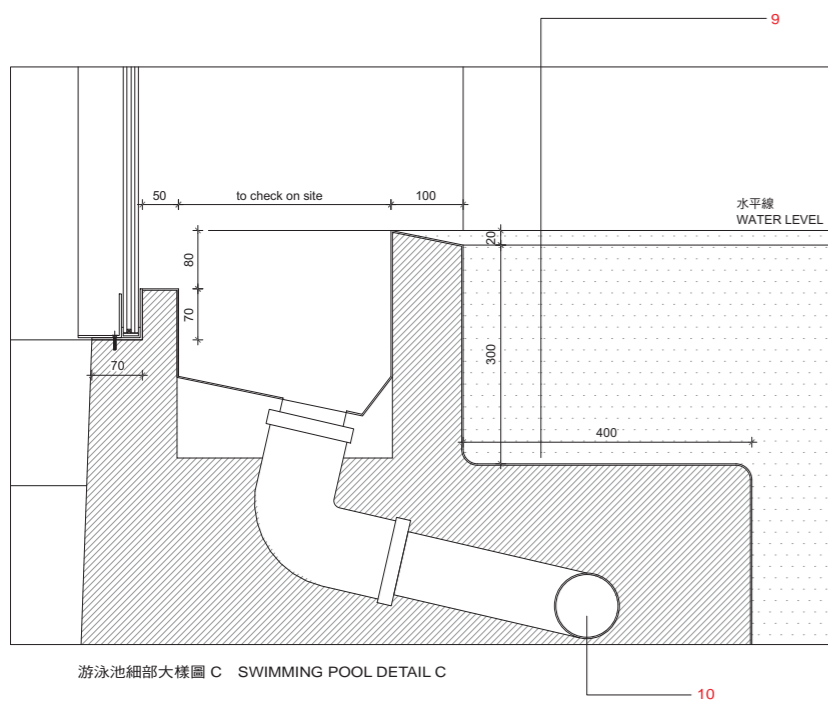
不銹鋼管躺椅平面圖
STAINLESS STEEL CHAISE LOUNGE PLAN



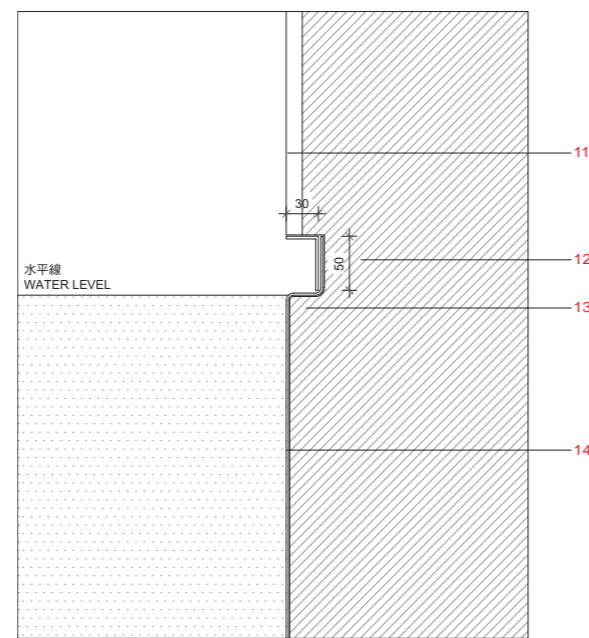
游泳池細部大樣圖 A SWIMMING POOL DETAIL A



游泳池細部大樣圖 B SWIMMING POOL DETAIL B



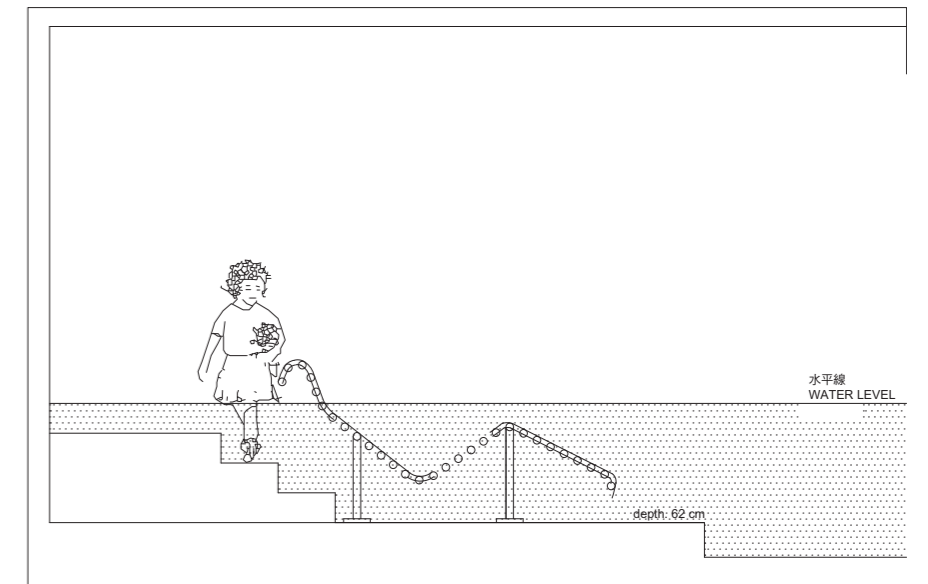
游泳池細部大樣圖 C SWIMMING POOL DETAIL C



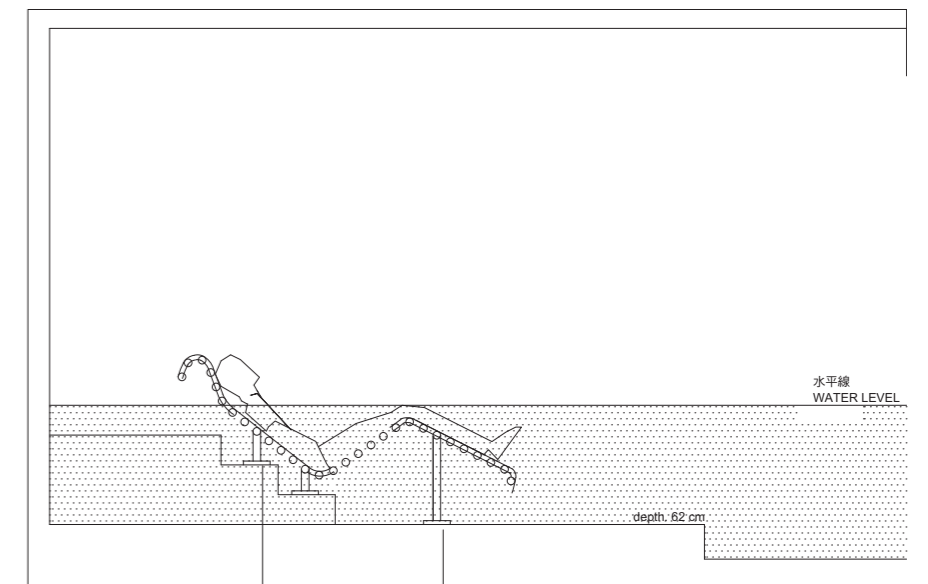
游泳池細部大樣圖 D SWIMMING POOL DETAIL D

1. 置於水中，依據靠背長椅背部的長度決定
2. 數量與位置依據不銹鋼定位支架決定
3. 水流輸送管道
4. 置於石板內網格，厚度4公分，檢查用
5. 以金屬固定於牆上，規格2mm的淺色隔板
6. 透明玻璃
7. 70×70mm L型架固定於牆壁
8. 60×60mm L型架以支撐玻璃
9. 以金屬固定於牆上，規格2mm的淺色腰帶
10. 直徑90mm的排水管
11. 白色防水石膏板
12. 不銹鋼L型架
13. 圓邊處理
14. 以金屬固定於牆上的2mm 淺色PVC板

1. immersed in water verify the length of chaise lounge back
2. number and position to be verified on sitetubular legs in stainless steel
3. passage ducts
4. grill in stone for inspection thk 4 cm
5. 2mm membrane sheet to be fixed with plate (anchored to wall) light color
6. transparent glass
7. "L" shape profile 70×70mm fixed to wall
8. "L" shape profile 60×60mm to hold the glass
9. 2mm girdle sheet to be fixed with plate (anchored to wall) light color
10. drainage tube Ø 90mm
11. water-proof plaster board like "terracolor" white color
12. "L" shape profile in stainless steel
13. rounded edge
14. 2mm pvc layer sheet to be fixed with plate (anchored to wall) light color sample to be approved



不銹鋼管躺椅細部大樣圖 形式1
STAINLESS STEEL CHAISE LOUNGE DETAIL -1



不銹鋼管躺椅細部大樣圖 形式2
STAINLESS STEEL CHAISE LOUNGE DETAIL -2