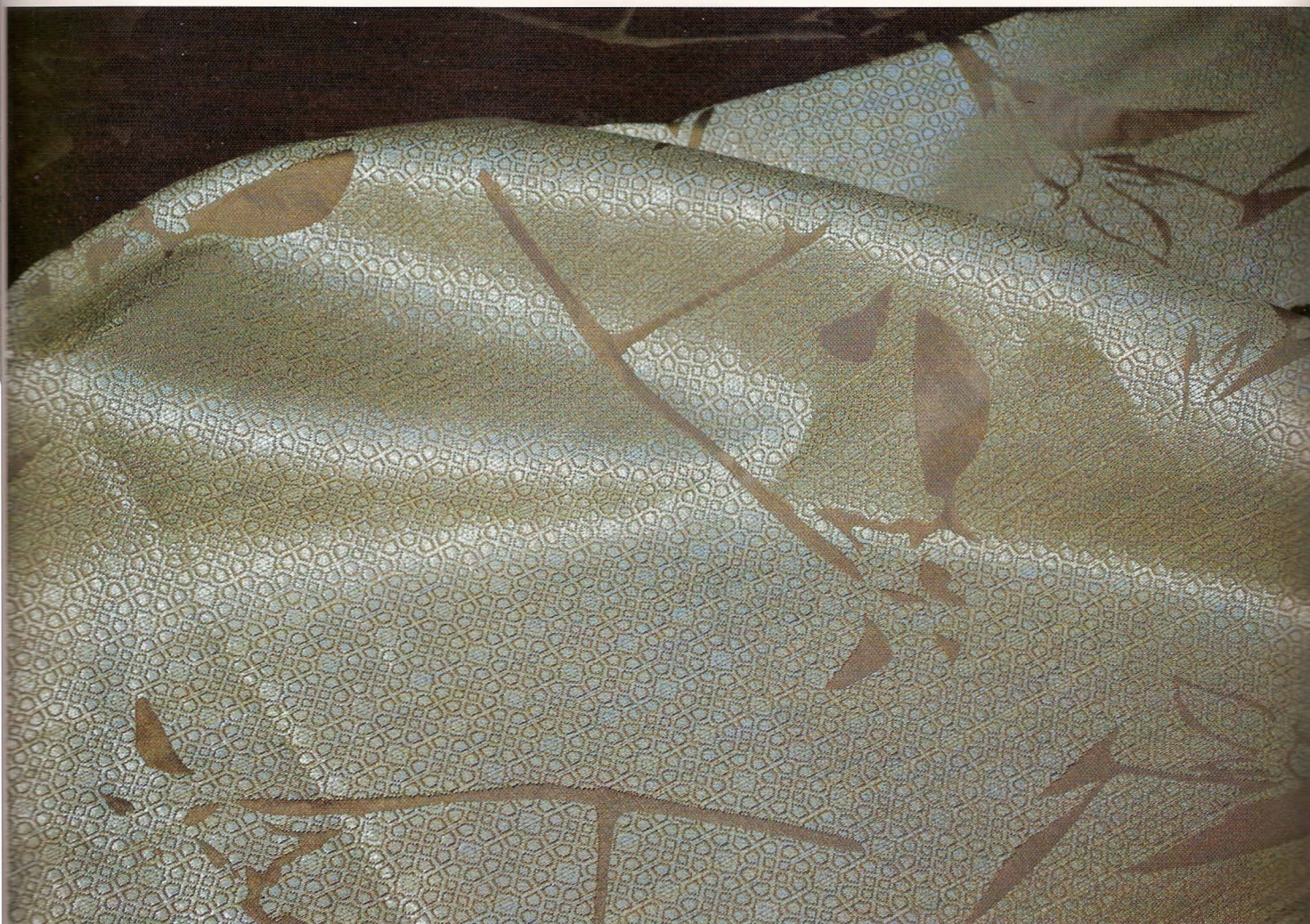


# SoFar/SoNear OFFERS 'AISHA BY MARTA NASAZZI/PELA ASSOCIATI







**S**oFar/SoNear is a young Milan based company operating in the high-end market for interiors. Driven by a constant search for new and exciting materials, SoFar/SoNear offers a wide range of fabric sand rugs for interiors.

From the very beginning the offer was marked by the proposal of innovative home textiles, felts and carpets complying with standards of sustainable development. The idea was to inject a little Italian style into the all too often rather style free arena of traditional handicraft.

'Aisha' by Marta Nasazzi/Peia Associati. Aisha is the new collection of fabrics designed by Marta Nasazzi/Peia Associati. Inspired by the fascinating geometries of the 'Mashrabiya', the traditional oriel windows enclosed with carved wood, the collection is especially suited for the Hospitality, from the private house to the luxury resort. The artful collection 'Aisha' by Marta Nasazzi/Peia Associati, was